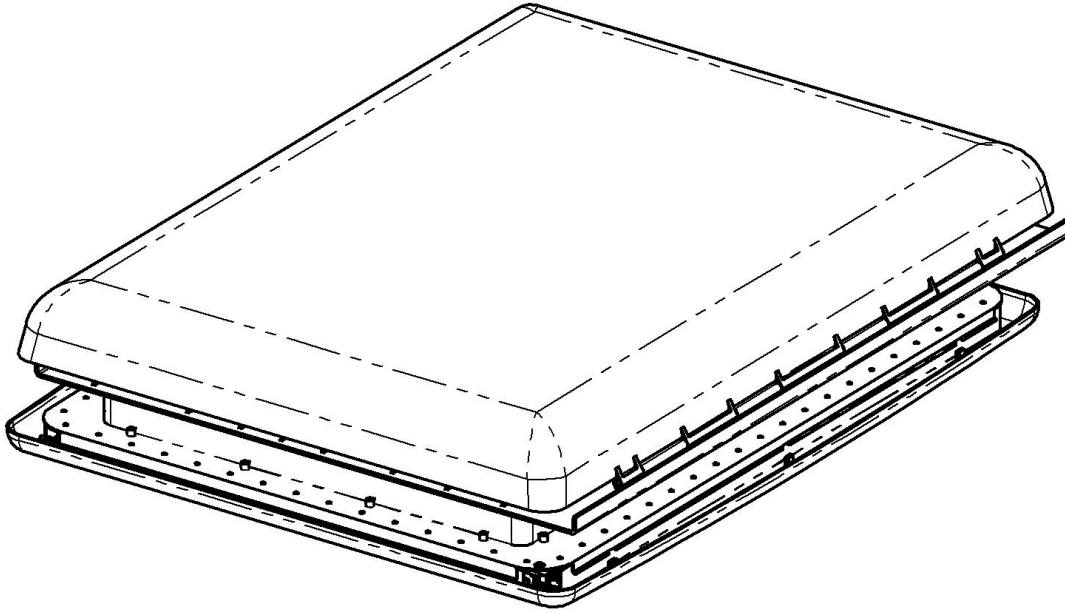


MAXXAIR®

REPAIR PARTS LIST FOR SKYMAXX LX & SKYMAXX LX Plus International Models: 97000i, 97100i, 97010i, 97110i, 97000iA, 97100iA, 97010iA, 97110iA



WARRANTY INFORMATION

Please have the **MODEL NUMBER & SERIAL NUMBER** of your **SKYMAXX** available when **calling for parts and service**. The model number and serial number are on the back page of the Installation/Operation Manual. The model number is also on the ceiling flange which is viewable by removing the interior frame assembly.

For technical assistance, repair parts or warranty claim assistance concerning your **MAXXAIR SkyMaxx**, please contact your local AIRXCEL distributor or email us at rvpsupport@airxcel.com.

For Full WARRANTY Terms and Conditions on products purchased in Australia or New Zealand, please visit www.coastrv.com.au or www.coastrv.nz.

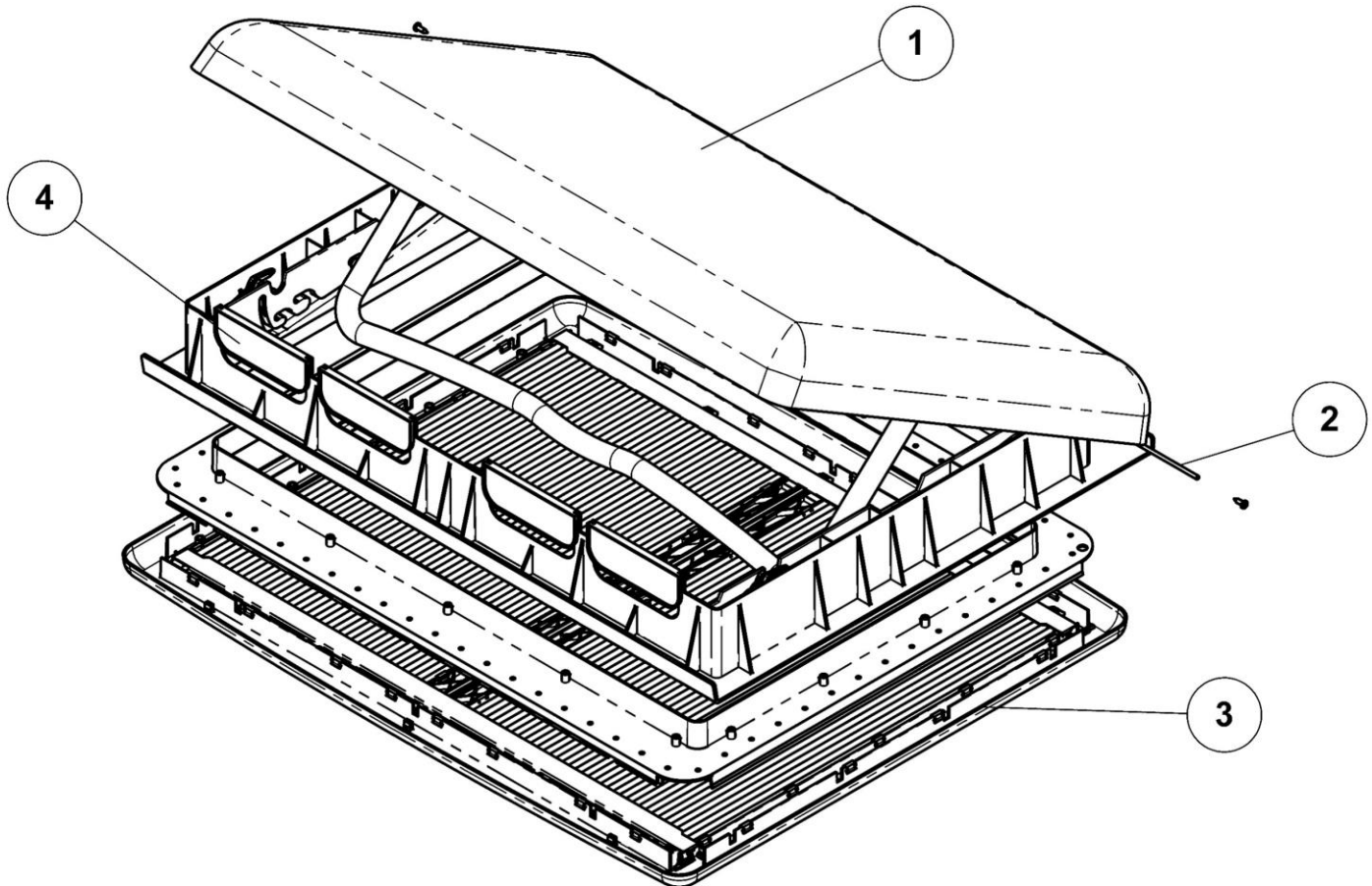
For Full WARRANTY terms and conditions, on products purchased outside of the US, Australia or New Zealand, please contact your AIRXCEL, Inc. distributor.

WARNING! To reduce risk of fire, injury to persons or damage to property, use only in the manner intended by AIRXCEL, INC. Should you have questions, please contact AIRXCEL/MAXXAIR Customer Service at rvpsupport@airxcel.com.



REPAIR PARTS LIST

FOR SKYMAXX LX & SKYMAXX LX Plus International
MODELS: 97000i, 97100i, 97010i, 97110i,
97000iA, 97100iA, 97010iA, 97110iA



CODE	USED ON MODEL	PART NUMBER	DESCRIPTION	NO. REQUIRED
1	All	11-00205i	Lid Assembly	1
2	All	11A00238i	Hinge Pin	1
3	97000i,97100i	11-00275i	Interior Frame Assembly	1
	97010i,97110i	11-00250i	Interior Frame Assembly (LED)	1
4	All	05-00185i	Vent Insert w/ Screen	4
	All	11-00185i	Vent Insert Blank	4
ns	97000i,97010i	11A00260i	Hardware Kit	1
ns	97100i,97110i	11A00262i	Hardware Kit	1

CODE ns - Not Shown

Small Parts Package

Mounting Screws 11-00279i