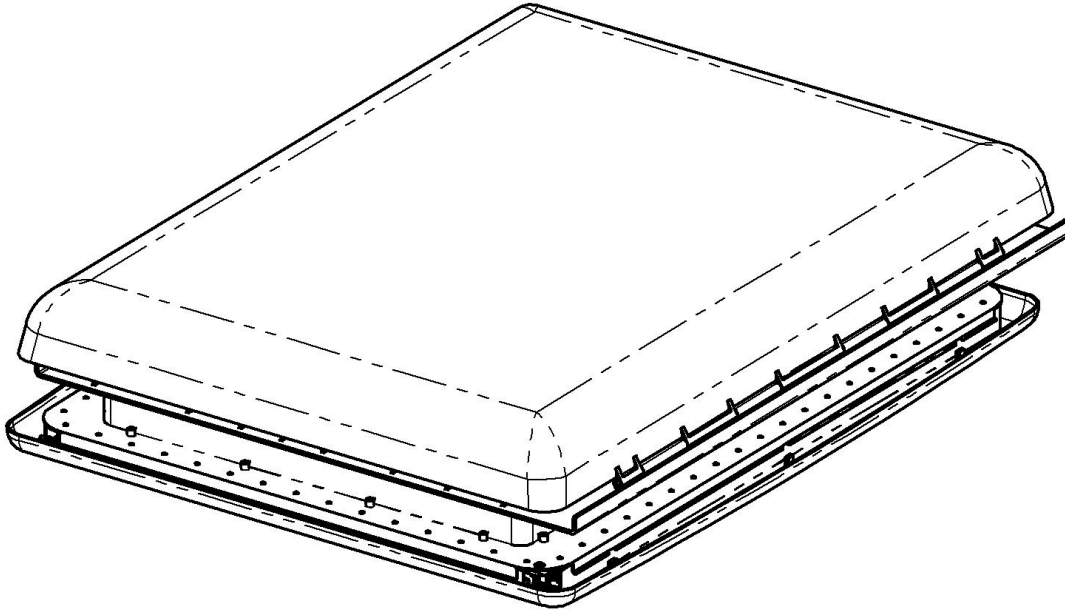


# MAXXAIR®

## REPAIR PARTS LIST FOR SKYMAXX LX & SKYMAXX LX Plus Models: 97000, 97100, 97010, 97110,



## WARRANTY INFORMATION

Please have the **MODEL NUMBER & SERIAL NUMBER** of your **SKYMAXX** available when **calling for parts and service**. The model number and serial number are on the back page of the Installation/Operation Manual. The model number is also on the ceiling flange which is viewable by removing the interior frame assembly.

For technical assistance, repair parts or warranty claim assistance concerning your **MAXXAIR SkyMaxx**, please contact us at 316.832.3400 or email us at [rvpsupport@airxcel.com](mailto:rvpsupport@airxcel.com).

For Full **WARRANTY** terms and conditions, please visit [AIRXCEL.com](http://AIRXCEL.com).

**WARNING!** To reduce risk of fire, injury to persons or damage to property, use only in the manner intended by **AIRXCEL, INC.** Should you have questions, please contact **AIRXCEL/MAXXAIR Customer Service** at [rvpsupport@airxcel.com](mailto:rvpsupport@airxcel.com).

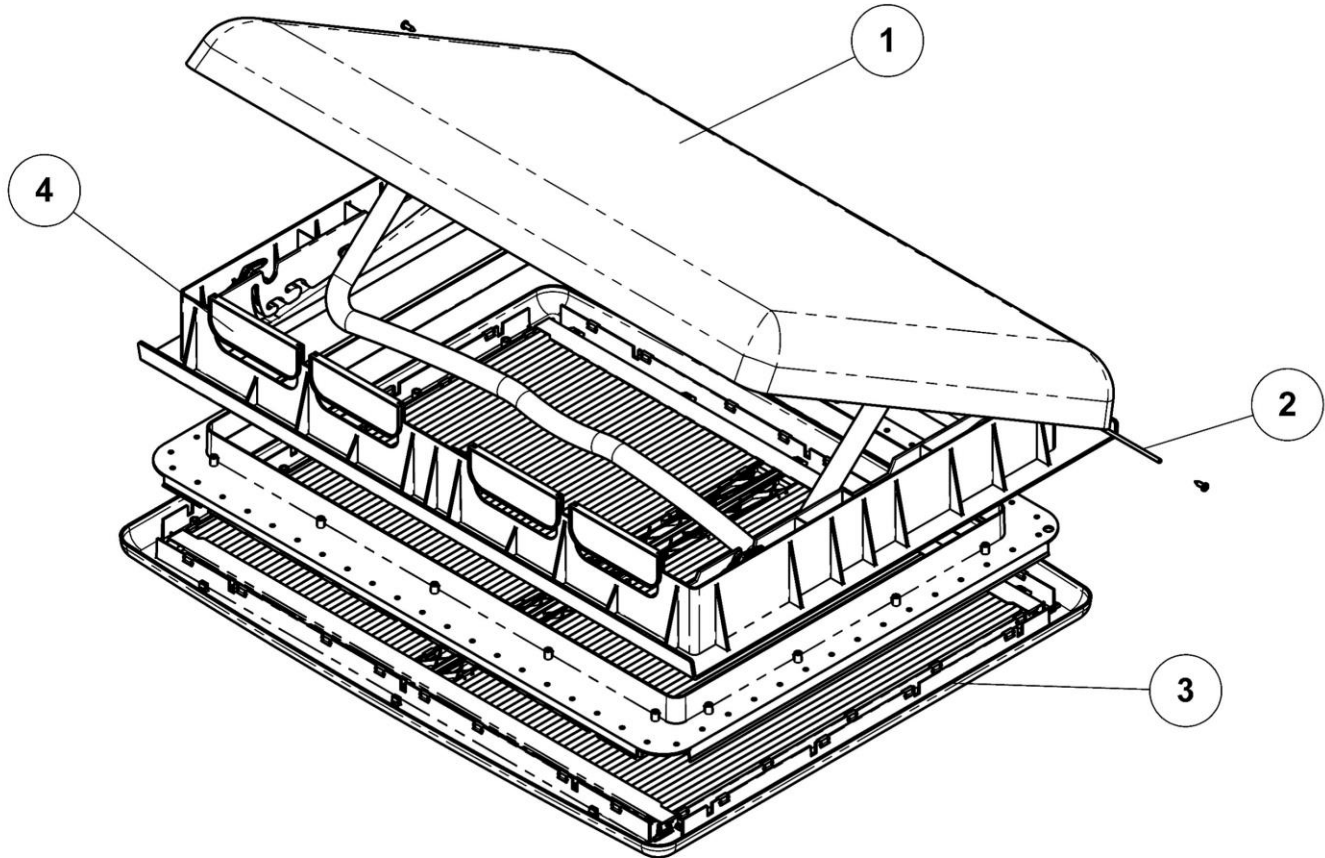


An **AIRXCEL** Brand

# REPAIR PARTS LIST

## FOR SKYMAXX LX & SKYMAXX LX Plus

### MODELS: 97000, 97100, 97010, 97110



CODE	USED ON MODEL	PART NUMBER	DESCRIPTION	NO. REQUIRED
1	All	11-00205	Lid Assembly	1
2	All	11A00238	Hinge Pin	1
3	97000,97100	11-00275	Interior Frame Assembly	1
	97010,97110	11-00250	Interior Frame Assembly (LED)	1
4	All	05-00185	Vent Insert w/ Screen	4
	All	11-00185	Vent Insert Blank	4
ns	97000,97010	11A00260	Hardware Kit	1
ns	97100,97110	11A00262	Hardware Kit	1

CODE ns - Not Shown

Small Parts Package

Mounting Screws 11-00279